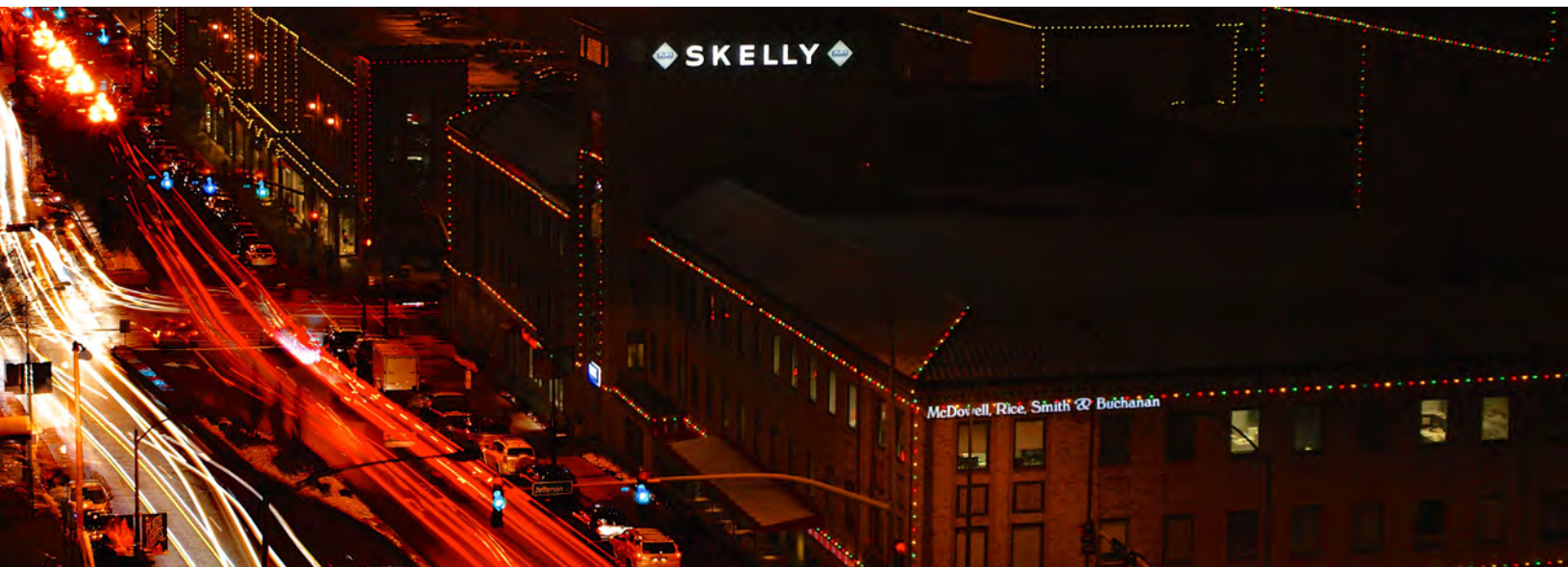




SKELLY BUILDING ON THE COUNTRY CLUB PLAZA

Kansas City's High End Retail, Restaurant, Hotel, Office, and Entertainment District - World Famous Since 1922



5,321 SF & 2,380 SF OFFICE SPACE \$25/SF FULL SERVICE

DEMOGRAPHICS

	1 mile	3 miles	5 miles
Estimated Population	20,070	120,042	275,286
Avg. Household Income	\$118,123	\$123,927	\$106,082

- 5,321 SF Former Law Office Available For Lease - Class A build-out (1 large conference room, 4 large offices, 1 very large presidential office, 6 permanent cubicles, 2 huge storage areas, 1 large meeting/war room, 1 large break room, and a large server room)
- 2,300 SF lower level built-out office space, next door to Panera Bread
- Class A lobby with 47th Street entrance
- Covered and heated parking garage



CLICK HERE TO VIEW MORE LISTING INFORMATION

For More Information Contact:

Exclusive Agents

DAVID BLOCK | 816.412.7400 | dblock@blockandco.com

ALEX BLOCK | 816.412.7373 | ablock@blockandco.com

MAX KOSOGLAD | 816.412.7363 | mkosoglad@blockandco.com

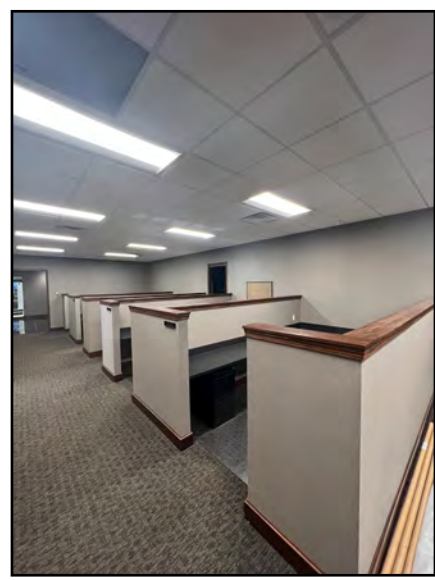
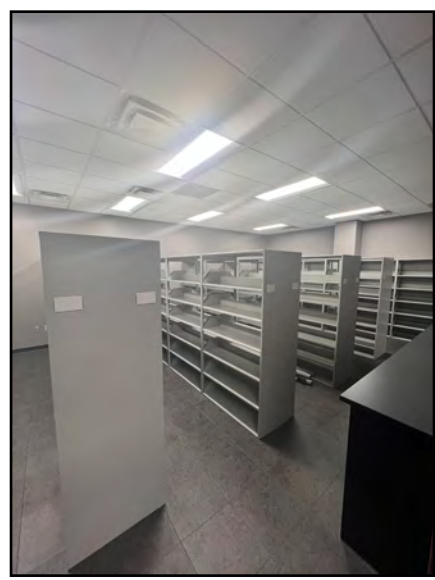
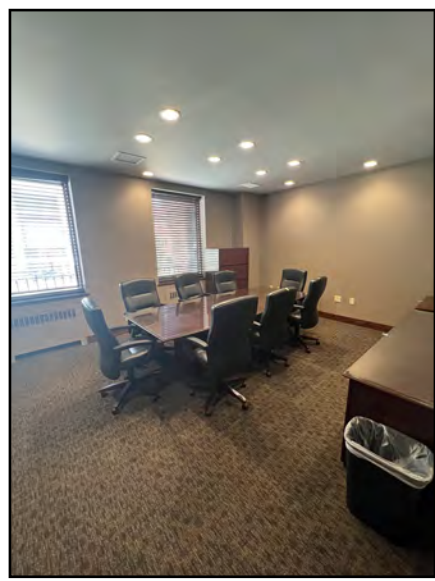
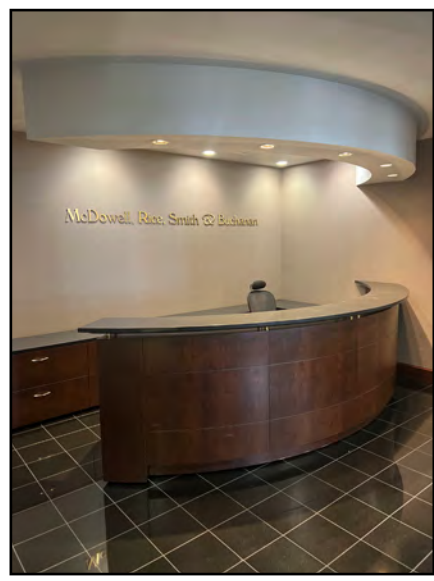
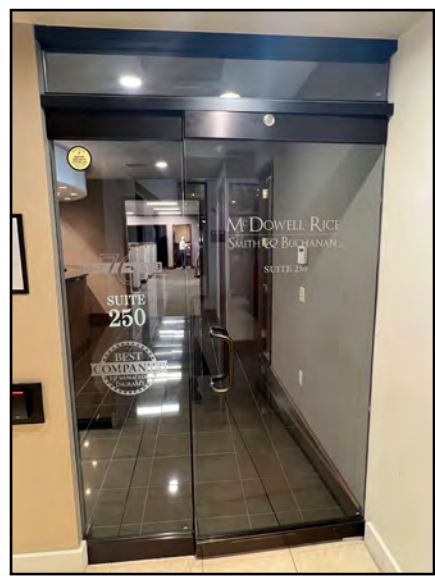




SKELLY BUILDING ON THE COUNTRY CLUB PLAZA

Kansas City's High End Retail, Restaurant, Hotel, Office,
and Entertainment District - World Famous Since 1922

2ND FLOOR OFFICE SPACE PHOTOS (5,321 SF)





SKELLY BUILDING ON THE COUNTRY CLUB PLAZA

Kansas City's High End Retail, Restaurant, Hotel, Office, and Entertainment District - World Famous Since 1922

2ND FLOOR OFFICE SPACE PHOTOS (5,321 SF)

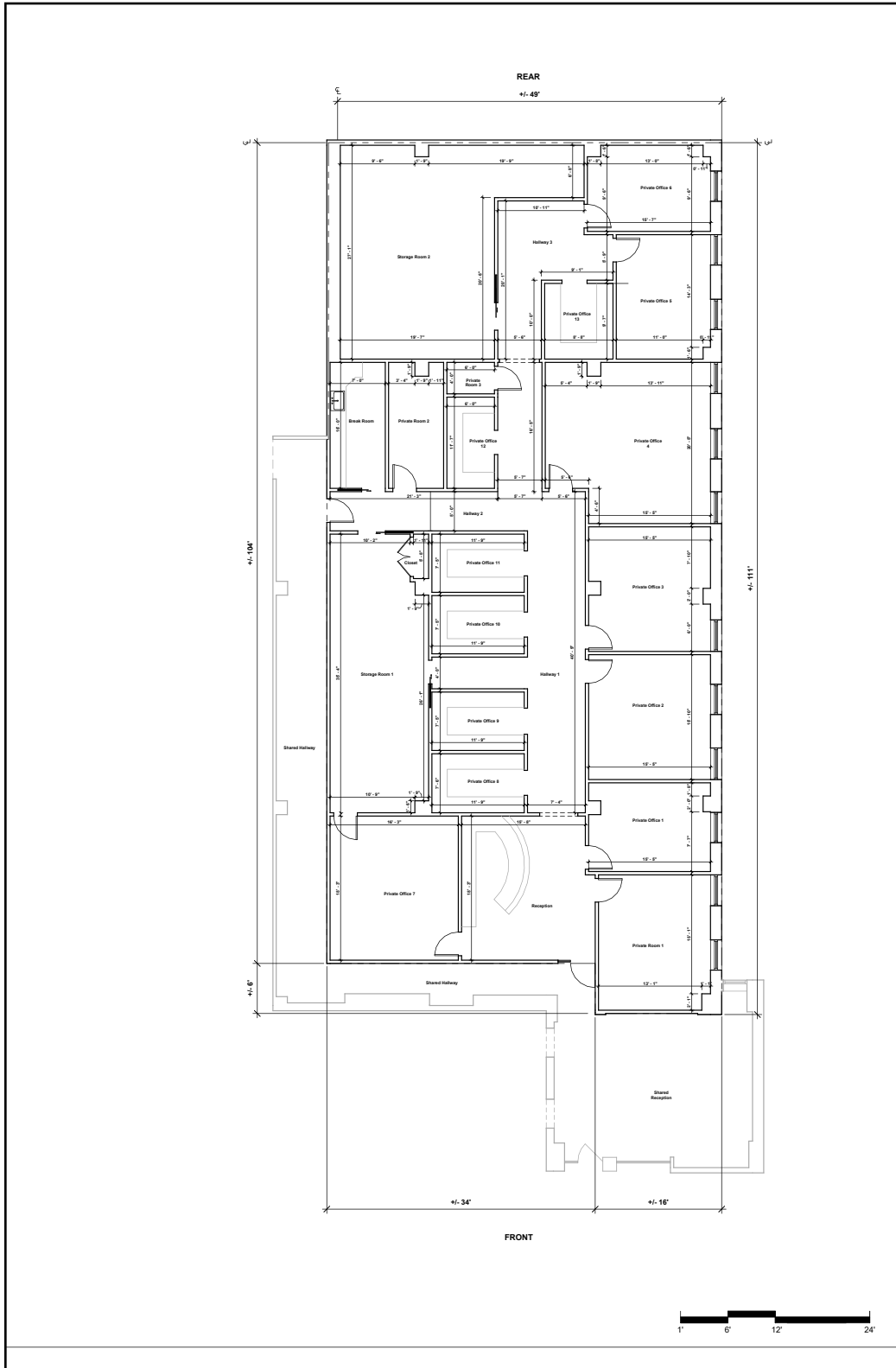




SKELLY BUILDING ON THE COUNTRY CLUB PLAZA

Kansas City's High End Retail, Restaurant, Hotel, Office, and Entertainment District - World Famous Since 1922

5,321 SF OFFICE SPACE PLAN (2ND FLOOR)



**Plaza Skelly
Group LLC**



BLOCK & COMPANY INC.
REALTORS

605 W 47th Street, Suite
200 Kansas City, MO 64112

**Unit # 250
Ground Floor
+/- 5,308 SF**

Gross Square footage shown was measured on-site and adheres to BOMA standards

**Width
+/- 50'**

**Depth
+/- 111'**

Revisions

Floor Plan
Prepared 10/27/2023
Unit # 250

Plans Produced by:
ID PLANS

400 North Tampa St. Suite 2210
Tampa, FL 33602
Phone: (866) 657-2545
idplans.com



© 2023

Floor plan is for general use and purposes only. ID Plans does not guarantee the accuracy or validity of provided information. Measurements are not intended to be architecturally valid for construction purposes or accepted as replacement for documents, drawings, or media intended or claiming to be structurally accurate, such as blueprints. The property owner has and reserves the right and responsibility to verify, change or alter the provided information at any time for any reason.

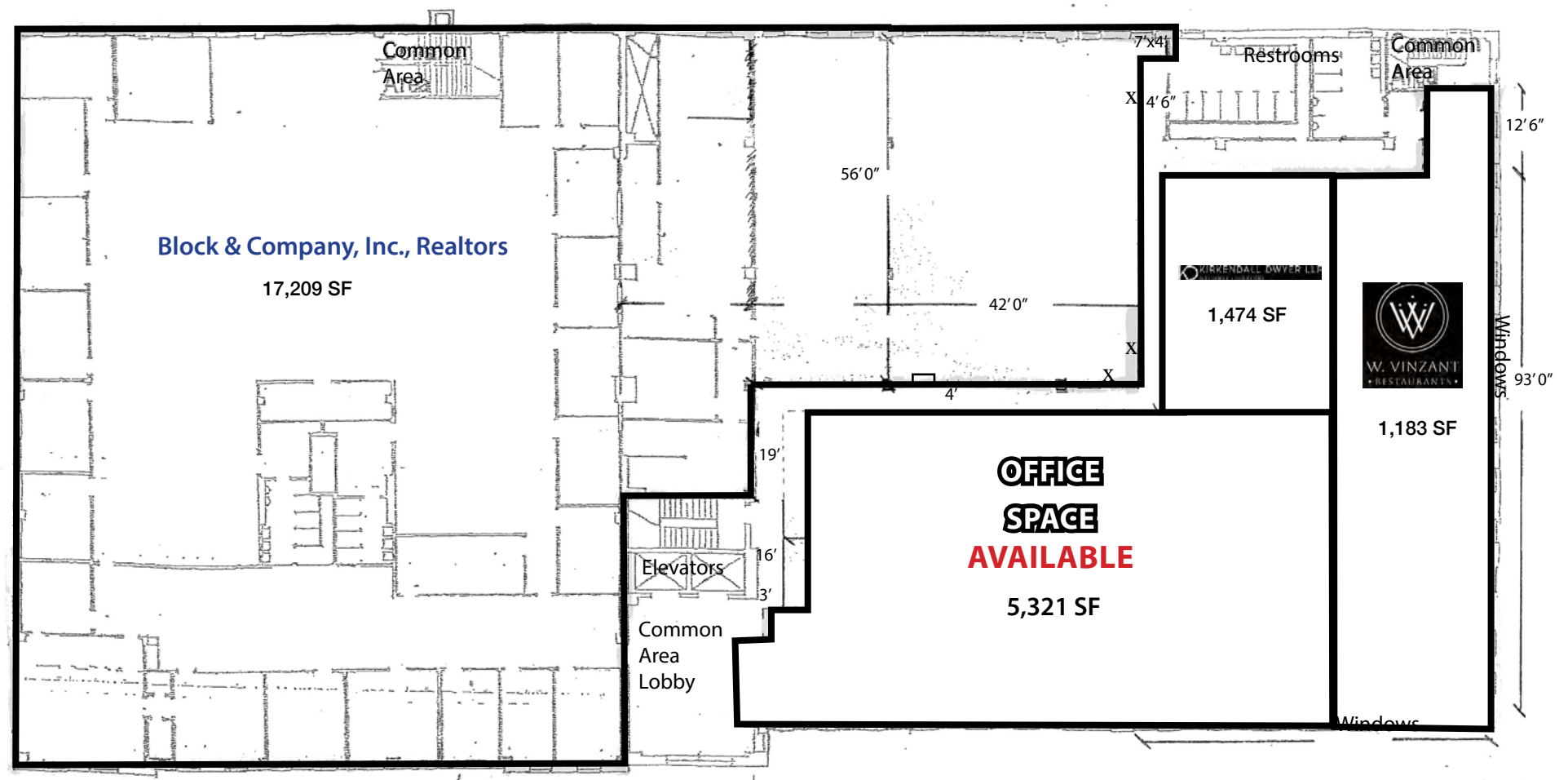




SKELLY BUILDING ON THE COUNTRY CLUB PLAZA

Kansas City's High End Retail, Restaurant, Hotel, Office,
and Entertainment District - World Famous Since 1922

OFFICE SPACE PLAN (2ND FLOOR)

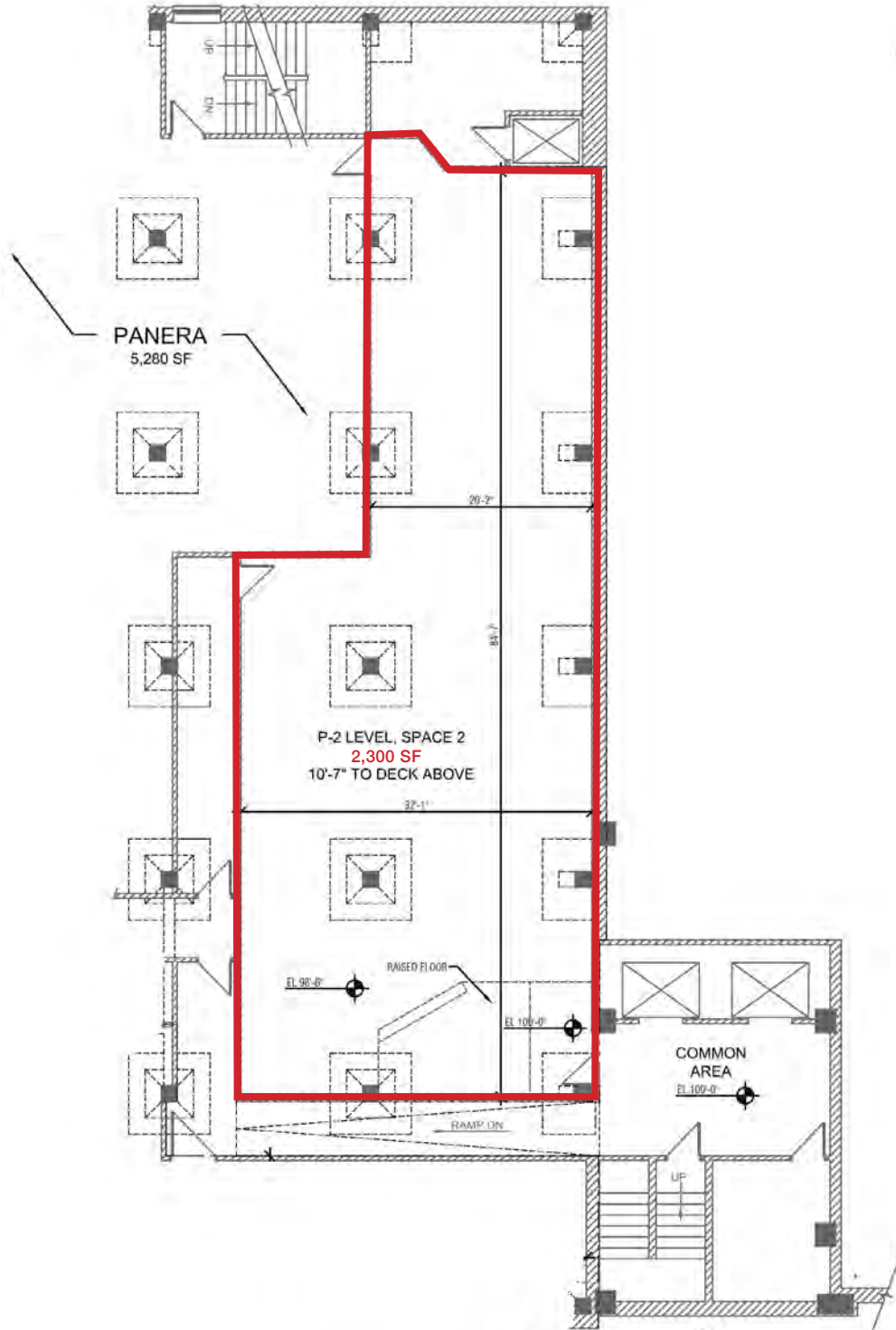





SKELLY BUILDING ON THE COUNTRY CLUB PLAZA

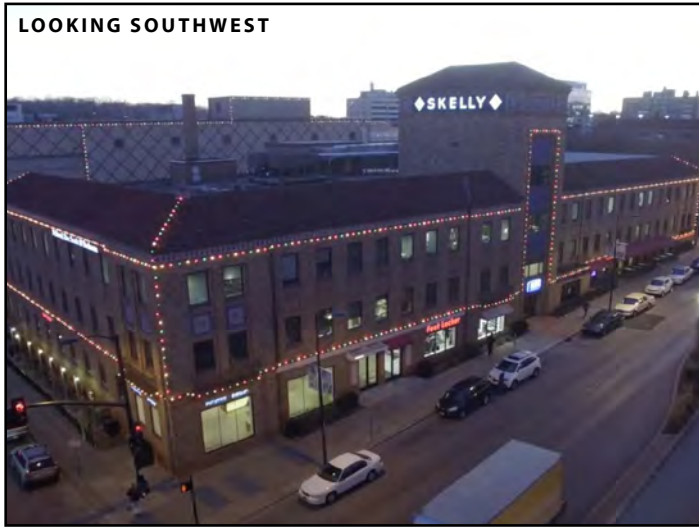
Kansas City's High End Retail, Restaurant, Hotel, Office, and Entertainment District - World Famous Since 1922

2,300 SF OFFICE SPACE PLAN (P2 LEVEL)



P-2 LEVEL 
BLOCK & COMPANY - SKELLY BUILDING
 605 WEST 47TH STREET KANSAS CITY, MISSOURI

EXTERIOR PHOTOS





SKELLY BUILDING ON THE COUNTRY CLUB PLAZA

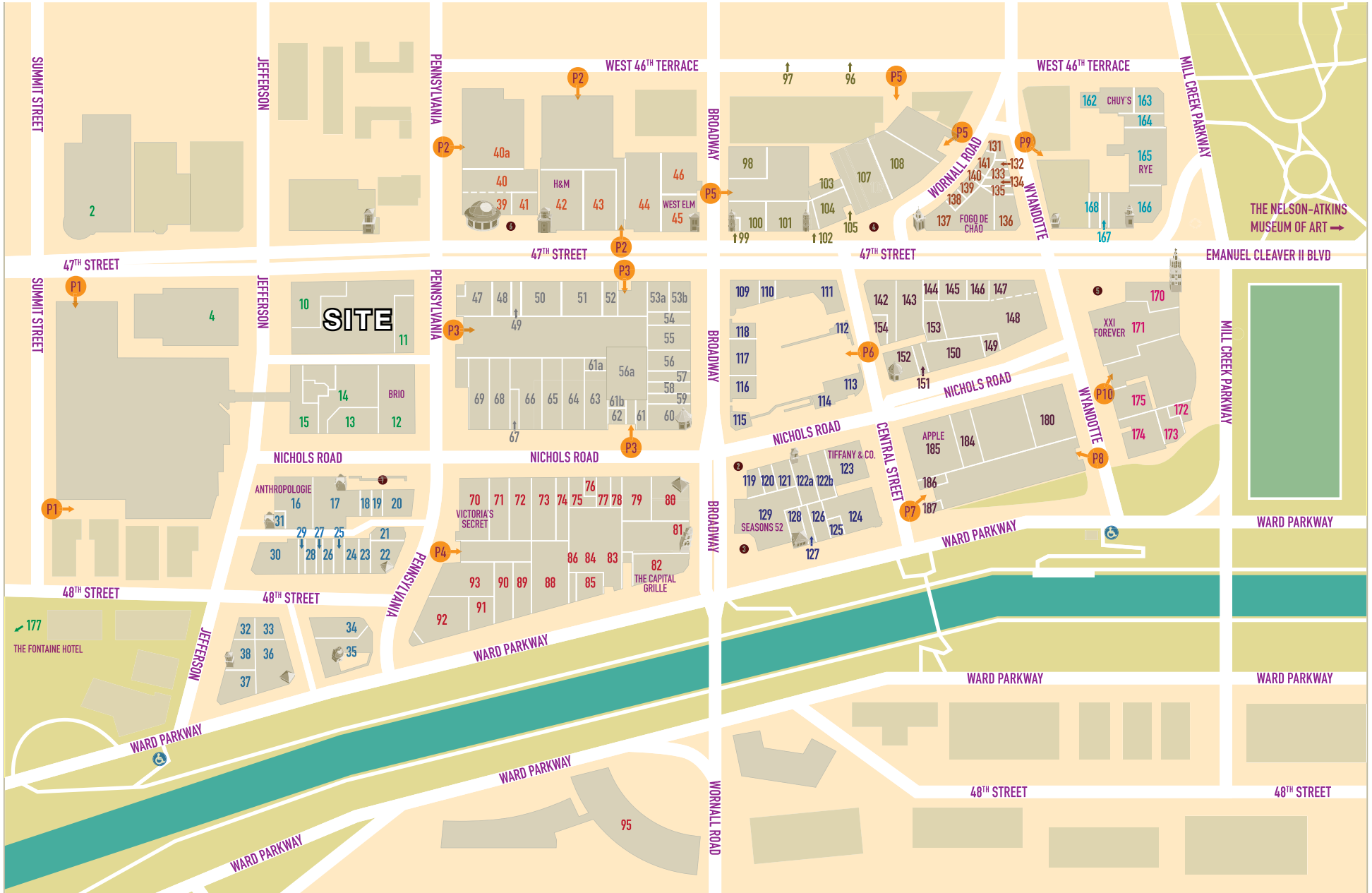
Kansas City's High End Retail, Restaurant, Hotel, Office,
and Entertainment District - World Famous Since 1922

AERIAL PHOTOS





COUNTRY CLUB PLAZA



NEW TO THE PLAZA

27 Bambou Salons ◉	561-1302
154 Bruu Café ◉ ✕	239-3249
109 EB & Co. ◉	214-6223
63 Kindred Shops ◉	492-7287
115 Matches Boutique ◉ ✕	255-3159
102 Messenger – 47th Street ◉	326-8644
31 Messenger – Jefferson ◉	437-8445
151 Nickel & Suede ◉	499-8811
143 Rally House – East ◉	384-0581
124 Sterling Bank (ATM) ✕	627-6600

WOMEN'S APPAREL / ACCESSORIES

66 Altar'd State	865-6100
16 Anthropologie	531-4429
11 Athleta	753-7557
57 Chico's	931-3777
77 Eileen Fisher ✕	531-5566
145 Evereve	569-2253
58 Francesca's Collections	531-5141
67 Free People ✕	531-2669
120 kate spade new york ✕	756-5244
63 Kindred Shops ◉	492-7287
122a Madewell	756-5365
115 Matches Boutique ◉ ✕	255-3159
119 Michael Kors ✕	531-2038
151 Nickel & Suede ◉	499-8811
128 Ricca Sposa Bridal ✕	913-709-4615
79 Soft Surroundings ✕	756-5040
20 Terrasi Living & Scandia Home ◉ ✕	753-4144
70 Victoria's Secret	531-2650
109 White House Black Market	960-0580

MEN'S & WOMEN'S APPAREL / ACCESSORIES

39 Banana Republic	753-1157
53a Charlie Hustle ◉ ✕	541-4387
73 Express	753-7151
42 H&M	960-1030
68 Indochino ✕	855-334-0788
17 J.Crew	753-9744
118 J.McLaughlin ✕	960-3754
54 Lucky Brand Jeans ✕	753-5823
80 lululemon	531-2894
184 Marine Layer ✕	569-0276
50 Moosejaw	832-4493
43 The North Face ✕	931-4439
104 Old Navy	756-0300
143 Rally House – East ◉	384-0581
91 Rally House – West ◉	756-5409
101 Tommy Bahama ✕	531-8688
152 UNTUCKit ✕	216-1455
13 Urban Outfitters ✕	753-8500
48 Vans	531-2058
53b vineyard vines ✕	800-5128
171 XXI Forever	753-7473

ACCESSORIES / OPTICAL / LUGGAGE

146 Brighton Collectibles ✕	531-8138
100 Coach	561-1771
109 EB & Co. ◉	214-6223
120 kate spade new york ✕	756-5244
119 Michael Kors ✕	531-2038
26 Milan Optique ◉ ✕	569-2700
74 Sunglass Hut	531-4340
57 Tumi ✕	753-4306
122b Warby Parker ✕	298-0660

SHOES

59 Aldo	531-4790
39 Banana Republic	753-1157
146 Brighton Collectibles ✕	531-8138
120 kate spade new york ✕	756-5244
119 Michael Kors ✕	531-2038
50 Moosejaw	832-4493
131 Renner's Boots, Shoes & Repair ◉ ✕	561-0740
48 Vans	531-2058

CHILDREN'S APPAREL

53a Charlie Hustle ◉ ✕	541-4387
42 H&M	960-1030
17 J.Crew Crewcuts	753-9744
43 Old Navy	931-4439
143 Rally House – East ◉	384-0581
91 Rally House – West ◉	756-5409
53b vineyard vines ✕	800-5128
171 XXI Forever	753-7473

GIFTS / SPECIALTY STORES

144 3DHQ ◉ ✕	913-204-1234
185 Apple	448-9200
44 Barnes & Noble Booksellers	753-1313
72 Bath & Body Works	561-1613
88 Beauty Brands ◉	753-8822
121 Casper ✕	301-7431
85 Diebel's Sportsmens Gallery ◉	931-2988
55 Hallmark Gold Crown ◉	931-4555
68 Indochino ✕	855-334-0788
49 IT'SUGAR ✕	759-8666
120 kate spade new york ✕	756-5244
80 lululemon	531-2894
107 Made in KC Marketplace ◉	718-0806
50 Moosejaw	832-4493
151 Nickel & Suede ◉	499-8811
104 The North Face ✕	756-0300
33 Paper Source	753-2777
143 Rally House – East ◉	384-0581
91 Rally House – West ◉	756-5409
148 RE: Emporium ◉	913-274-8321
128 Ricca Sposa Bridal ✕	913-709-4615
64 Sephora	753-5996
20 Terrasi Living & Scandia Home ◉ ✕	753-4144

23 Three Dog Bakery ◉	753-3647
123 Tiffany & Co. ✕	531-7676
56 T-Mobile ◉	521-6300
45 west elm ✕	960-3765

HOME / ART / ANTIQUES

16 Anthropologie	531-4429
107 Made in KC Marketplace ◉	718-0806
148 RE: Emporium ◉	913-274-8321
79 Soft Surroundings ✕	756-5040
20 Terrasi Living & Scandia Home ◉ ✕	753-4144
13 Urban Outfitters ✕	753-8500
45 west elm ✕	960-3765

JEWELRY

109 EB & Co. ◉	214-6223
61 Kendra Scott	448-8323
151 Nickel & Suede ◉	499-8811
123 Tiffany & Co. ✕	531-7676
150 TIVOL	531-5800
32 Vinca Fine Jewelry ◉ ✕	531-5591

PERSONAL / PROFESSIONAL SERVICES

21 Amazing Lash Studio	338-0340
27 Bambou Salons ◉	561-1302
88 Beauty Brands ◉	753-8822
29 Brow Threading ◉ ✕	913-492-4060
175 CorePower Yoga	897-0678
84 Country Club Carwash ◉ ✕	365-2641
61b Country Club Plaza Public Safety	753-7973
62 Industrious ✕	281-8605
139 Larissa's Tailor Shop ◉ ✕	753-1209
163 Massage Envy	994-3689
56a Mojo Cycling Studio ◉ ✕	561-1995
134 Plaza Hair Design ◉ ✕	753-2936
133 Plaza Nails ◉ ✕	701-6616
131 Renner's Boots, Shoes & Repair ◉ ✕	561-0740
141 Salon Sophia ◉ ✕	756-0024
56 T-Mobile	521-6300
4 Unity Temple	561-4466
186 The UPS Store	561-7411
122b Warby Parker ✕	298-0660

RESTAURANTS

12 BRIO Italian Mediterranean ✕	561-5888
105 Buca di Beppo ✕	931-6548
82 The Capital Grille ✕	531-8345
170 The Cheesecake Factory	960-1919
162 Chuy's ✕	931-2783
111 Classic Cup Café ◉ ✕	753-1840
46 Cooper's Hawk Winery & Restaurant ✕	531-1500
174 Fiorella's Jack Stack Barbecue ◉	531-7427
137 Fogo de Chão ✕	931-7700
35 Gram & Dun ◉ ✕	389-2900
36 The Granfalloon Restaurant & Bar ◉ ✕	753-7850
89 Kona Grill ✕	931-5888

40 McCormick & Schmick's Seafood ✕	531-6800
90 The Melting Pot ✕	931-MELT
22 O'Dowd's Gastrobar ◉ ✕	561-2700
166 P.F. Chang's China Bistro ✕	931-9988
116 Potbelly Sandwich Shop	332-4953
165 Rye ◉	541-3382
129 Seasons 52 ✕	531-0052
142 Shake Shack	807-4030
92 True Food Kitchen ✕	931-4947
30 Zócalo Mexican Cuisine ◉ ✕	756-5555

SPECIALTY FOOD & WINE

167 Auntie Anne's / Cinnabon	216-1087
44 Barnes and Noble Café	753-1313
24 The Better Cheddar ◉	561-8204
154 Bruu Café ◉ ✕	239-3249
168 Cold Stone Creamery	531-8200
138 Cupcake A La Mode ◉	960-1911
49 IT'SUGAR ✕	759-8666
107 Made in KC Marketplace ◉	718-0806
102 Messenger – 47th Street ◉	326-8644
31 Messenger – Jefferson ◉	437-8445
113 Starbucks	753-4246
112 Topsy's Popcorn Shoppe ◉	753-7373

FINANCIAL INSTITUTIONS

47 Bank of America (ATM)	714-7010
61a Country Club Bank (ATM) & Drive-thru	931-4060
124 Sterling Bank (ATM) ✕	627-6600

LOCAL

144 3DHQ ◉ ✕	913-204-1234
27 Bambou Salons ◉	561-1302
88 Beauty Brands ◉	239-3249
24 The Better Cheddar ◉	753-8822
154 Bruu Café ◉ ✕	561-8204
53a Charlie Hustle ◉ ✕	541-4387
111 Classic Cup Café ◉ ✕	753-1840
138 Cupcake A La Mode ◉	960-1911
149 Cupcakin Bakery ◉ ✕	813-4880
85 Diebel's Sportsmens Gallery ◉	931-2988
109 EB & Co. ◉	214-6223
174 Fiorella's Jack Stack Barbecue ◉	531-7427
35 Gram & Dun ◉ ✕	389-2900
36 The Granfalloon Restaurant & Bar ◉ ✕	753-7850
55 Hallmark Gold Crown ◉	931-4555
63 Kindred Shops ◉	492-7287
139 Larissa's Tailor Shop ◉ ✕	753-1209
107 Made in KC Marketplace ◉	718-0806
115 Matches Boutique ◉ ✕	255-3159
102 Messenger – 47th Street ◉	326-8644
31 Messenger – Jefferson ◉	437-8445
26 Milan Optique ◉ ✕	569-2700
56a Mojo Cycling Studio ◉ ✕	561-1995
151 Nickel & Suede ◉	499-8811
22 O'Dowd's Gastrobar ◉ ✕	561-2700

134 Plaza Hair Design ◉ ✕	753-2936
133 Plaza Nails ◉ ✕	701-6616
143 Rally House – East ◉	384-0581
91 Rally House – West ◉	756-5409
131 Renner's Boots, Shoes & Repair ◉ ✕	561-0740
148 RE: Emporium ◉	913-274-8321
128 Ricca Sposa Bridal ◉ ✕	913-709-4615
165 Rye ◉	541-3382
141 Salon Sophia ◉ ✕	756-0024
20 Terrasi Living & Scandia Home ◉ ✕	753-4144
23 Three Dog Bakery ◉	753-3647
150 TIVOL ◉	531-5800
56 T-Mobile	521-6300
112 Topsy's Popcorn Shoppe ◉	753-7373
32 Vinca Fine Jewelry ◉ ✕	531-5591
30 Zócalo Mexican Cuisine ◉ ✕	756-5555

HOTELS

177 The Fontaine Hotel ✕	913-8800
95 The InterContinental Hotel ✕	756-1500
97 Residence Inn by Marriott	753-0033
2 Sheraton Suites	931-4400

COURTYARDS

1 Penguin	4 Neptune
2 Mermaid	5 Chandler
3 Pomona	6 Valencia

PARKING

1 Seville Garage	10 Plaza Central Garage
2 Valencia Place Garage	11 Plaza 211 West Garage
3 Granada Garage	12 Plaza 211 East Garage
4 Time Garage	13 Mill Creek Garage
5 Balcony Garage	14 Giralda Garage

MISCELLANEOUS

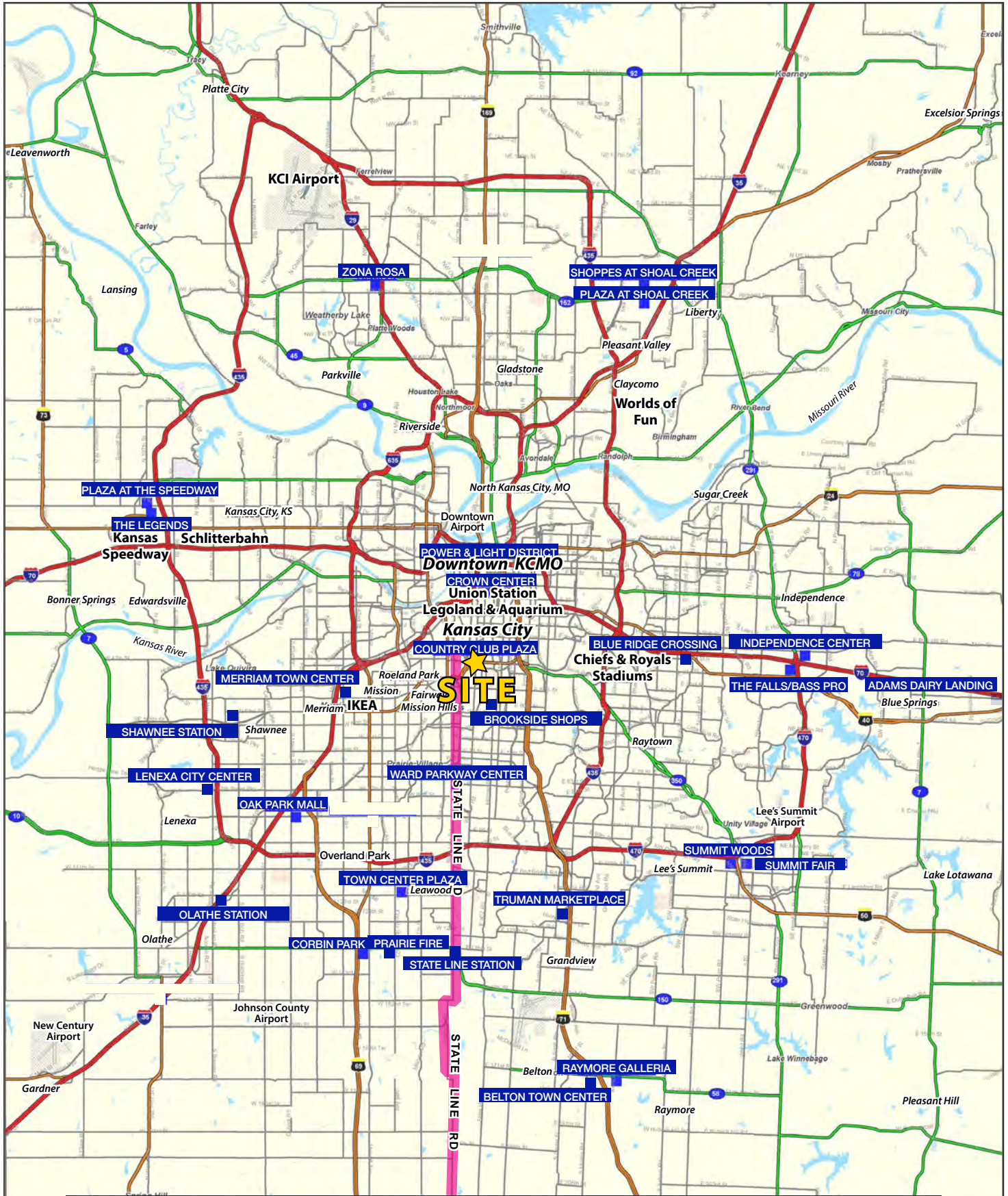
15 Brush Street Handicapped Access
◉ Kansas City Original
✕ Exclusive to the Plaza

All area codes are (816) unless noted otherwise.



SKELLY BUILDING ON THE COUNTRY CLUB PLAZA

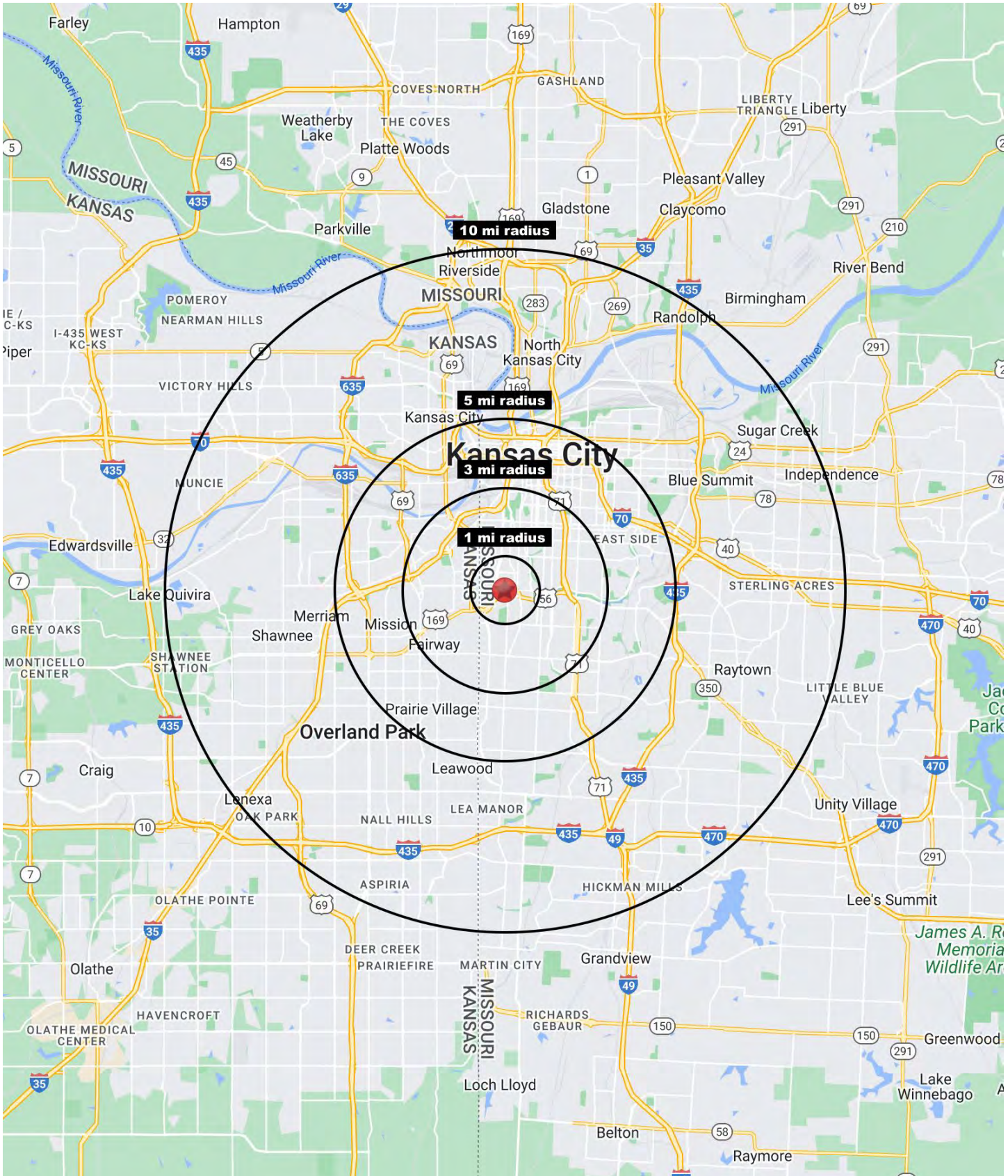
Kansas City's High End Retail, Restaurant, Hotel, Office, and Entertainment District - World Famous Since 1922





SKELLY BUILDING ON THE COUNTRY CLUB PLAZA

Kansas City's High End Retail, Restaurant, Hotel, Office, and Entertainment District - World Famous Since 1922





SKELLY BUILDING ON THE COUNTRY CLUB PLAZA

Kansas City's High End Retail, Restaurant, Hotel, Office,
and Entertainment District - World Famous Since 1922

605 W. 47th Street Kansas City, MO 64112	1 mi radius	3 mi radius	5 mi radius	10 mi radius
Population				
2023 Estimated Population	20,070	120,042	275,286	764,657
2028 Projected Population	20,001	118,962	271,707	751,896
2020 Census Population	20,003	117,426	269,929	760,180
2010 Census Population	18,289	111,166	256,458	730,964
Projected Annual Growth 2023 to 2028	-	-0.2%	-0.3%	-0.3%
Historical Annual Growth 2010 to 2023	0.7%	0.6%	0.6%	0.4%
2023 Median Age	34.9	37.0	36.6	38.2
Households				
2023 Estimated Households	12,141	56,105	124,365	328,485
2028 Projected Households	11,938	55,115	122,370	322,290
2020 Census Households	11,670	54,981	122,463	325,854
2010 Census Households	10,739	51,710	113,780	308,346
Projected Annual Growth 2023 to 2028	-0.3%	-0.4%	-0.3%	-0.4%
Historical Annual Growth 2010 to 2023	1.0%	0.7%	0.7%	0.5%
Race and Ethnicity				
2023 Estimated White	76.7%	57.1%	53.5%	59.3%
2023 Estimated Black or African American	7.7%	28.3%	29.5%	22.4%
2023 Estimated Asian or Pacific Islander	7.6%	4.4%	3.5%	3.8%
2023 Estimated American Indian or Native Alaskan	0.3%	0.4%	0.5%	0.5%
2023 Estimated Other Races	7.7%	9.9%	12.9%	14.0%
2023 Estimated Hispanic	8.7%	10.4%	14.3%	15.5%
Income				
2023 Estimated Average Household Income	\$118,123	\$123,927	\$106,082	\$102,783
2023 Estimated Median Household Income	\$88,901	\$86,269	\$78,211	\$76,134
2023 Estimated Per Capita Income	\$71,759	\$58,148	\$48,173	\$44,331
Education (Age 25+)				
2023 Estimated Elementary (Grade Level 0 to 8)	1.3%	2.2%	3.6%	3.9%
2023 Estimated Some High School (Grade Level 9 to 11)	3.2%	4.4%	5.6%	5.7%
2023 Estimated High School Graduate	11.0%	19.9%	22.5%	24.3%
2023 Estimated Some College	11.3%	16.6%	18.1%	20.4%
2023 Estimated Associates Degree Only	5.1%	5.3%	5.9%	7.1%
2023 Estimated Bachelors Degree Only	38.0%	29.6%	26.3%	23.8%
2023 Estimated Graduate Degree	30.1%	22.0%	18.1%	14.8%
Business				
2023 Estimated Total Businesses	2,407	7,055	15,767	36,331
2023 Estimated Total Employees	30,240	87,964	196,636	486,649
2023 Estimated Employee Population per Business	12.6	12.5	12.5	13.4
2023 Estimated Residential Population per Business	8.3	17.0	17.5	21.0

©2024, Sites USA, Chandler, Arizona, 480-491-1112 Demographic Source: Applied Geographic Solutions 11/2023, TIGER Geography - RS1

